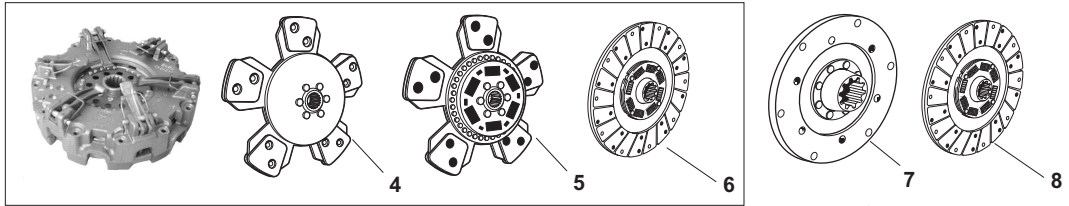


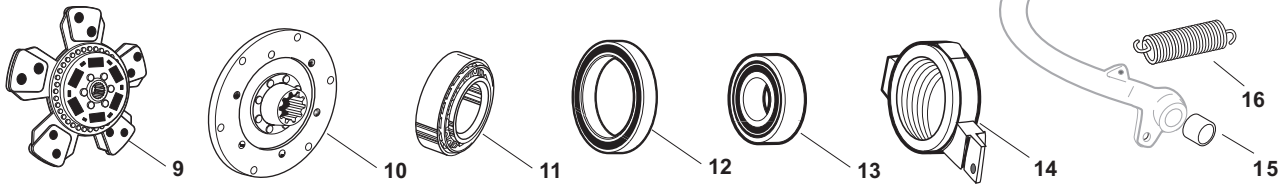
## Sparex Replacement Parts - Long

## Clutch and Related Components



\*The only difference between these Rep Sets is the captive main plate. Choosing your clutch will depend upon which plate you prefer.

Luk 12 bolt Rep Set is used to repair not only 12 Bolt Luk clutches but 9 Bolt Valeo style clutches as well.



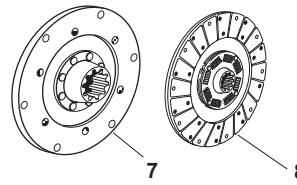
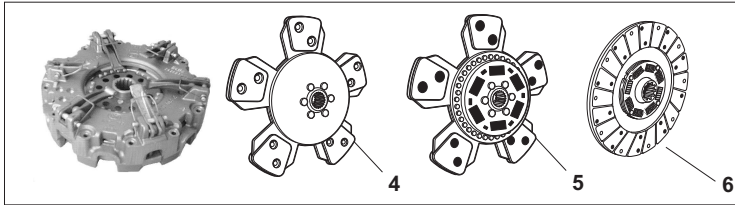
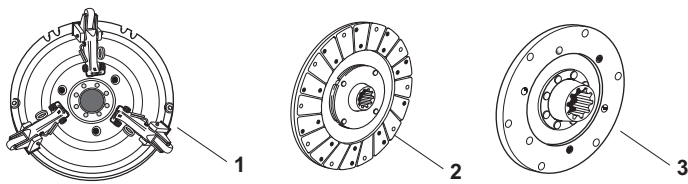
SPAREX No.	DESCRIPTION	EQUIVALENT	TRACTOR MODEL
1	<b>S.58924</b> Clutch Assembly (10") w/ PTO & Tractor Drive Discs - Flat Bottom Plate	TX12806	260C, 310, 310DT, 310C, 350, 360, 360C, 445, 445DT, 445SD, 445V, 460, 460DT, 460SD, 460V
1	<b>S.66750</b> Clutch Assembly (10") w/ PTO & Tractor Drive Discs - Stepped Bottom Plate	TX12806	260C, 310, 310DT, 310C, 350, 360, 360C, 445, 445DT, 445SD, 445V, 460, 460DT, 460SD, 460V
2	<b>S.58925</b> Disc - Transmission Drive (10", 1 9/16"-19 Spline)	TX13010	260C, 310, 310DT, 310C, 350, 360, 360C, 445, 445DT, 445SD, 445V, 460, 460DT, 460SD, 460V
3	<b>S.69913</b> Disc - PTO Drive (10", 1"-10 Spline)	TX13011	260C, 310, 310DT, 310C, 350, 360, 360C, 445, 445DT, 445SD, 445V, 460, 460DT, 460SD, 460V
4*	<b>S.61201</b> Clutch Rep Set (11") Includes Clutch Assembly w/ 5 Pad Rigid Disc - Organic PTO Disc - Replaces 9 Bolt Valeo Clutches	TX17247 TX14987	320, 460, 460DT, 460SD, 460V, 510, 510DT, 560, 560DT, 560DTE, 610, 610DT, 610DTE, 610C, 2510, 2510DTC, 2510SD, 2510SD-DTC, 2610, 2610DTC, 2610SD, 2610SD-DTC, 2460, 2460DTC, 2460SD, 2460SD-DTC
5*	<b>S.61266</b> Clutch Rep Set (11") Includes Clutch Assembly w/ 5 Pad Sprung Disc - Organic PTO Disc - Replaces 9 Bolt Valeo Clutches	TX17247 TX14987	320, 460, 460DT, 460SD, 460V, 510, 510DT, 560, 560DT, 560DTE, 610, 610DT, 610DTE, 610C, 2510, 2510DTC, 2510SD, 2510SD-DTC, 2610, 2610DTC, 2610SD, 2610SD-DTC, 2460, 2460DTC, 2460SD, 2460SD-DTC
6*	<b>S.61267</b> Clutch Rep Set (11") Includes Clutch Assembly w/ Organic Sprung Disc - Organic PTO Disc - Replaces 9 Bolt Valeo Clutches	TX17247 TX14987	320, 460, 460DT, 460SD, 460V, 510, 510DT, 560, 560DT, 560DTE, 610, 610DT, 610DTE, 610C, 2510, 2510DTC, 2510SD, 2510SD-DTC, 2610, 2610DTC, 2610SD, 2610SD-DTC, 2460, 2460DTC, 2460SD, 2460SD-DTC
7	<b>S.62185</b> Clutch Disc - Main (11") Organic / Rigid (11" x 1 9/16" - 14)	TX16809	460, 460DT, 460SD, 460V, 510, 510DT, 560, 560DT, 560DTE, 610, 610DT, 610DTE, 610C
8	<b>S.69915</b> Clutch Disc - Main (11") Organic Dampener Springs (11" x 1 9/16" - 14)	TX16809	460, 460DT, 460SD, 460V, 510, 510DT, 560, 560DT, 560DTE, 610, 610DT, 610DTE, 610C
9	<b>S.61252</b> Clutch Disc - Main (11") w/ 5 Pad Dampener Springs (11" x 1 9/16" - 14)	TX17077	320, 2510, 2510DTC, 2510SD, 2510SD-DTC, 2610, 2610DTC, 2610SD, 2610SD-DTC, 2360, 2360DTC, 2460, 2460DTC, 2460SD, 2460SD-DTC

Please see Index for alternative O.E. part numbers.

These parts are Sparex parts and are not manufactured by the Original Equipment Manufacturer. Original Equipment Manufacturer names, part numbers and descriptions are quoted for reference purposes only.

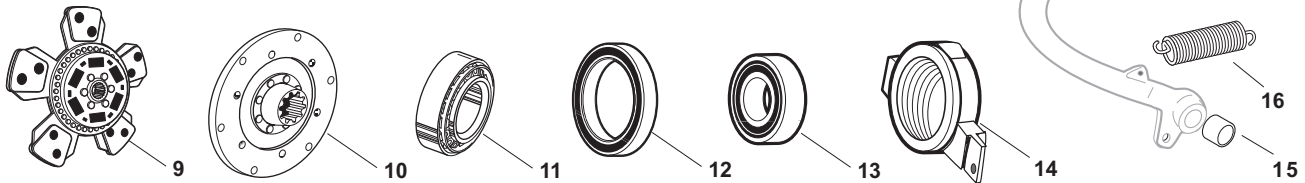
## Sparex Replacement Parts - Long

### Clutch and Related Components



\*The only difference between these Rep Sets is the captive main plate. Choosing your clutch will depend upon which plate you prefer.

Luk 12 bolt Rep Set is used to repair not only 12 Bolt Luk clutches but 9 Bolt Valeo style clutches as well.



SPAREX No.	DESCRIPTION	EQUIVALENT	TRACTOR MODEL
10	<b>S.61927</b> Clutch Disc - PTO (11" x 1" - 10)	TX14989	320, 460, 460DT, 460SD, 460V, 510, 510DT, 560, 560DT, 560DTE, 610, 610DT, 610DTE, 610C, 2510, 2510DTC, 2510SD, 2510SD-DTC, 2610, 2610DTC, 2610SD, 2610SD-DTC, 2360, 2360DTC, 2460, 2460DTC, 2460SD, 2460SD-DTC
10	<b>S.61235</b> Clutch Disc - PTO (11" x 1" -x 10)		Use w/ Luk Clutch - 7/6mm Thick Lining
11	<b>S.62170</b> Release Bearing (11" Clutch) 8 Speed/8 Speed Shuttle Drive (Where Listed)	9-90423	320, 360, 360C, 460, 460DT, 460V, 510, 510DT, 2510, 2510DTC, 2510SD, 2510SD-DTC, 2610, 2610DTC, 2610SD, 2610SD-DTC, 2360, 2360DTC, 2460, 2460DTC
12	<b>S.18170</b> Bearing - PTO Release 8 Speed/8 Speed Shuttle Drive (65 x 100 x 11mm)	TX51596 TX51627	320, 360, 360C, 460, 460DT, 460SD, 460V, 510, 510DT, 560, 560DT, 560DTC, 610DT, 610DTE, 610C, 2510, 2510DTC, 2510SD, 2510SD-DTC, 2610, 2610DTC, 2610SD, 2610SD-DTC, 2360, 2360DTC, 2460, 2460DTC, 2460SD, 2460SD-DTC
13	<b>S.18133</b> Pilot Bearing (17 x 47 x 14mm)	TX11575	260C, 310, 310DT, 310C, 320, 350, 360, 360C, 445, 445DT, 445SD, 445V, 460, 460DT, 460SD, 460V, 510, 510DT, 550, 550DT, 560, 560DT, 560DTE, 610, 610DT, 610DTE, 610C, 2310, 2510, 2510DTC, 2510SD, 2510SD-DTC, 2610, 2610DTC, 2610SD, 2610SD-DTC, 2260, 2360, 2360DTC, 2460, 2460DTC, 2460SD, 2460SD-DTC
14	<b>S.61946</b> Hub - PTO Clutch Bearing - 8 Speed (Except where noted)	TX14854	320, 360, 360C, 460, 460DT, 460SD, 460V, 510, 510DT, 560, 560DT, (560DTE 12 Speed), 610, 610DT, (610DTE 12 Speed), 610C, 2510, 2510DTC, 2510SD, 2510SD-DTC, 2610, 2610DTC, 2610SD, 2610SD-DTC, 2360, 2360DTC, 2460, 2460DTC, 2460SD, 2460SD-DTC
15	<b>S.62402</b> Bushing - Clutch Pedal	TX10920	320, 360, 360C, 460, 460DT, 460SD, 460V, 510, 510DT, 560, 560DT, (560DTE 12 Speed), 610, 610DT, (610DTE 12 Speed), 610C, 2510, 2510DTC, 2510SD, 2510SD-DTC, 2610, 2610DTC, 2610SD, 2610SD-DTC, 2360, 2360DTC, 2460, 2460DTC, 2460SD, 2460SD-DTC
16	<b>S.61983</b> Spring - Clutch Pedal Return	TX10925	320, (460, 460V, 510 8 Speed), 550, 550DT, 560, 610, 610C, 2510, 2510DTC, 2510SD, 2510SD-DTC, 2610, 2610DTC, 2610SD, 2610SD-DTC, 2360, 2360DTC, 2460, 2460DTC, 2460SD, 2460SD-DTC

Please see Index for alternative O.E. part numbers.

These parts are Sparex parts and are not manufactured by the Original Equipment Manufacturer.

Original Equipment Manufacturer names, part numbers and descriptions are quoted for reference purposes only.